

Clocks Wanted

WANTED: ANSONIA PARTS
2-weight time only. BAGHDAD,
CAPITOL, or PROMPT. Dial, hands,
pendulum, weights, and beat scale.
ARNOLD MADNICK. 214-696-6901.
Email: bradsales@sbcglobal.net

WANTED: YOUR RARE ANSONIA
Royal Bonn, crystal, regulator, statue
or swinger clock for my collection.
ELMER CONTI, P. O. Box 368,
Dublin PA 18917. Ph: 215-453-3832.
Email: elmerc@prodigy.net

WANTED: Waterbury Taylor in the
Presidential Series. Complete clock in
any condition. DAVID LEINEN.
Ph: 763-350-6627
Email: davidleinen@hotmail.com

WANT: 4, 5, & 8-Bell ST
Sonora chime clocks and parts.
TOM CHAPELL, 1200 Pepper Pike,
Ann Arbor MI 48105. 734-668-7160.

WANTED - Clocks with WJRR or
WJ&S RR on glass or dial.
JOHN PETERS. Ph: 215-219-7813.
Email: peachkoblerpie@comcast.net

WANTED: Early banjo clocks, 1810s-
1830s. Glasses must be original to the
clock. Will consider damaged glasses as
long as they are original. Contact JOHN
VIOLE. Ph: 917-940-2510. Thank you.

WTD: Atmos and Anniversary clocks.
PAUL RICHMOND. Ph: 336-213-4577.
Email: oldtimekeepers@gmail.com

Dial and mvt for Spenser&Wooster, wood
mvt for Leavenworth, P&S, dial for JC Brown
acorn-wood mvt, Hoadley upside-down,
all clocks by G. Barber and Crum&Barber.
PAUL DEGNAN. 610-923-6570.

Wanted: No. 0 New Haven movement
8-day, deadbeat, sweep-second, weight-
driven, w/weight and pendulum. Also
buying long runners: 30-day, 60-day,
90-day, 6-month, and year runners.
GEORGE DIGH. Ph: 704-651-0061.
Email: george.digh@us.festo.com

WTD: a large, quality, weight-driven
seconds regulator 39" pendulum - the
bigger and older the better (e.g., Seth
Thomas, Waltham, E. Howard), or a tow-
er clock movement. I'm an hour east of
Detroit in Canada. Call TOM GOGAS.
519-542-9381 or tomgogas@live.ca

Long-time collector seeking: large
American wall and floor model regula-
tors to include astronomical regulators
from makers such as Seth Thomas,
George Jones, E. Howard, Waterbury,
etc. Seeking clocks in as original condi-
tion as possible. Feel free to email pics
and info to: jchoffman@roadrunner.com
J.C. HOFFMAN. Ph: 740-255-0251.

WANTED: CLOCK COLLECTIONS
JOE BREWER. Ph. 412-889-7734.
www.BrewersAntiqueClocks.com

WTD: Isaac Pearson, Burlington, NJ, tall
clock for my personal collection. Been
looking for 40 years! Help me find one!
NAWCC member since 1974. STEVE
PETRUCCELLI. Ph: 973-723-7947 (cell).
Email: steve@petrucelli.net

WTD: MORBIERS SELL & RESTORE
Also parts, books, and free advice.
THEO BURGER. Ph: 650-906-5275
(CA). Email: morbier4u@gmail.com

GAZO CLOCKS
Grandfather, wall, mantel clocks, music
boxes, etc. FRANK TRUTTA, 760 E.
Valley Pkwy., Escondido CA 92025.
Ph: 760-743-8516 or 760-751-2101

Field Suitcase Workshops

Join the fun of learning from our professional instructors and camaraderie
with the other students. **If you are interested, contact Pam at**
FSWProgram@verizon.net or phone 972-612-0712 for more information.

Look for class
overviews and
the tool list

on
the FSW webpage at
www.nawcc.org.

Click on
Education to find
the Field Suitcase
Workshops.



For information:
Pam Tischler
972-612-0712
FSWProgram
@verizon.net



Date	Course	City/State	Chapter	FSW Instructor
July 25-28	F105	Shalimar, FL	96	John Hubby
Aug. 6-9	F201	Kansas City, MO	36	Fred Tischler
Sept. 26-29	F201	Santa Paula, CA	190	Lex Rooker
Nov. 7-10	F103	Shalimar, FL	96	Bill Knaak
Nov. 14-17	F301	Grapevine, TX	124	Lehr Dircks

F103 Introduction to Chiming Clocks Course-
Tuition is \$300. Prerequisite is F102.

F105 Servicing and Repair of 400-Day Clocks Course-
Tuition is \$300. Prerequisite is F102.

F201 Fundamental Skills for Lathe & Clock Repair Course, Part 2-
Tuition is \$325. Prerequisite is F200.

F301 Introduction to Basic Pocket Watch Repair -
The American Pocket Watch Course. Tuition is \$300.

*Please note that there are prerequisites on some of the courses.
Tuition is also listed for each course.*

Please call 419-261-8434 (Ohio).
J. WESTLICK, ehowardastro@aol.com

WANTED: BIG CHELSEA, E. HOWARD, & BOSTON MARINE CLOCKS

WANTED HAHN PNEUMATIC
MASTER CLOCKS

Will buy everything wall-to-wall to get a few keepers. No pressure, no high estimates to get in or cherry-pick your best clocks. Excellent prices. JOE KADDIS. 203-227-7081. KADDIS1K@gmail.com

JAPANESE PRE-1873 CLOCKS
Buy/sell parts, cases, and books.
Also case and movement restoration.
THEO BURGER. Ph: 650-906-5275
(CA). Email: morbier4u@gmail.com

Buying Complete Collections
Museum-quality pieces to basket cases,
and everything in between. Unlimited
money available. We buy early period
pieces through Victorian, including
Willard, Howard, Seth Thomas,
double-dial calendars, etc. We will
arrange shipping or pickup, and we
specialize in quick, discreet transactions.
We cover the complete United States.
We look forward to hearing from you;
give us a try!

JOE D'AMICO. Ph: 845-558-8465.
Email: Joeydeluxed@comcast.net
RUSS JUNCK. Ph: 515-249-3911.

Buying Clocks and Watches and Parts
TERRY RETTIG. Ph: 574-315-8138.
Email: trettig@nd.edu

Collector would like to acquire any one of the following clocks – Howard No. 38, No. 24, No. 6, and Seth Thomas No. 10. Will pay cash. SAM HOCKMAN. Ph: 570-333-4071.

Any and all horological
watch and clock material!

If you're retiring, read this ad!!! I am interested in purchasing one item or your complete shop, especially watchmakers' shops. I am currently looking for complete watches, PW movements, WW movements, balance staffs, stems, mainsprings, jewels, crystals, cases, crowns, screws, material assortments, bestfit assortments, horological books, lathes, clocks, clock movements, dials, cases, hands, weights, etc. I will travel anywhere in USA and Canada. I will not cherry-pick. I will buy your complete inventory.

Prompt, discreet cash payment.

STEVE MITCHELL

Ph: 603-867-6277 or 603-224-6150
or email: SMITCH1208@comcast.net

Buying clock collections — will buy one or all, any condition. LEON-PAUL RICHMOND. Ph: 336-213-4577. Email: oldtimekeepers@gmail.com

watchnews.nawcc.org

FORMERLY WATCHDIG.ORG
a service of the NAWCC

featured articles

DAILY NEWS • PRESS RELEASES
EDUCATIONAL VIDEO

don't forget about 
mart
MARKETPLACE

for advertising info: mart@nawcc.org



WANTED: CLOCK COLLECTIONS
JOE BREWER. Ph. 412-889-7734.
www.BrewersAntiqueClocks.com

Buying Clocks and Watches and Parts
TERRY RETTIG. Ph: 574-315-8138.
Email: trettig@nd.edu

Wanted – GAZO CLOCKS – “San Juan
Bautista” grandfather and other Gazos
– wall, mantel, etc. DICK ROMER.
Ph: 217-899-1305 (Springfield, IL).

Wanted: Clock Collections, all collec-
tions and individual clocks, medium
and mid-levels. Atmos clocks, wall
and mantel. Need stock today. Call
BOB CROWDER. Ph: 513-678-6520
or email: bob@proclocks.com

Collector seeking McClintock outdoor
bank clocks as well as inside master
clocks. Prefer clocks to be complete with
original components as much as
possible. Feel free to email pics and info
to: jchoffman@roadrunner.com
J. C. HOFFMAN. Ph: 740-255-0251.

WTD: S. T. No. 60, 19, 8, 7, and Water-
bury No. 24 and 28 (please, no oak).
TOM MARREN. Ph: 314-965-8242.

WANTED: Irish horological items—
clocks, watches, ephemera—and contact
with anyone with similar interests.
KILLIAN ROBINSON, 2525 Forest Dr.,
Winston-Salem NC 27104.
336-725-7251 or kcbprl@gmail.com

LARGE AMERICAN JEWELERS
REGULATORS. Wanted: Ansonia,
New Haven, E. Howard, Seth Thomas,
Welch, Waterbury. Wall or floor models.
Only want original-finish unmolested
specimens. Will travel and pick up. Not
a dealer but collector and will pay your
price. Please call: 419-261-8434 or email:
ehowardastro@aol.com. J. WESTLICK.

WANTED: U.S. LIFE-SAVING
SERVICE, U.S. REVENUE CUTTER,
and U.S. Lighthouse Est. and
Service clocks mfd. by Chelsea or
E. Howard and related items. Marine
movements and parts mfd. by Boston
Clock Co. (time-only), as well as those
by Eastman, Fairhaven, Vermont.
A. DEMETER. Ph: 857-636-0142.

WTD: ATKINS WAGON SPRING
PONY SHOE MVMT. Movement only
ok. MIKE CLEARY. Ph: 954-557-3211.
Email: mcduffcleary@yahoo.com

Thomas Walker, Fredericksburg, VA,
clock for my personal collection.
NAWCC member since 1974. STEVE
PETRUCCELLI. Ph: 973-723-7947 (cell).
Email: steve@petrucelli.net

CLOCK COLLECTIONS WANTED
STEVE MITCHELL. 603-867-6277.
Email: SMITCH1208@comcast.net

Collector seeks the following clocks:
- Clocks sold by Litchfield Mfg.
- Clocks sold by J. C. Brown
- Period banjo clocks
- Salem bridge clocks
- NH mirror clocks
- E. Howard wall clocks
- S. Thomas weight regulators
I will purchase an entire collection to
buy a few good clocks at highest prices.
DR. HOWARD COHEN
47 Mustang Drive, Guilford CT 06437.
Ph: 203-809-3164
Email: howard-cohen@comcast.net

Collector seeking pre-1920 tubular
chime hall clocks. Seeking original
condition pieces with original compo-
nents. Feel free to email pics and info
to: jchoffman@roadrunner.com
JC HOFFMAN. Ph: 740-255-0251.

Second Annual NAWCC Conservation Seminar Preservation of Clock Mechanisms and Their Cases September 19-21, 2014

Location: NAWCC Classrooms/
Auditorium and School of
Horology Conservation Lab,
Columbia, PA

Instructor Gregg Perry practices horological conservation in his Tipton, PA, studio. He specializes in seventeenth- to nineteenth-century clocks, watches, early scientific instruments and their cases. He has trained and studied at the NAWCC, BHI, and West Dean College and has apprenticed in Germany, Belgium, and Italy. He has written conservation programs for the Campbell Center for Conservation and has taught at NYU.

Friday, Sept. 19

Conservation
vs. Restoration vs. Repair
Horological Ethics
Obligation to Client
Conservation and Restoration
of Marquetry Cases
3:30-5:00 P.M. Conservation and
Restoration of Chinoiserie
Cases

Registration

Members Early \$495 (before August 5)

Members Regular \$545

Non-Members Early \$535 (before August 5)

Non-Members Regular \$595

(Lab Fee \$25)

Saturday, Sept. 20

Principles and Objectives
for Maintaining an Artifact
Conservation of Brass Dials
Conservation of Gilded Surfaces

Sunday, Sept. 21

Horological Mechanism
Conservation
and Restoration
Case Restructuring and Veneer

Please see nawcc.org >> education section
for descriptions of topics listed above.

Register online at nawcc.org > Education.

Questions? Contact Katie Knaub: education@nawcc.org. Phone 717-684-8261, ext. 237.

WANTED - anything relating to United States Clock Company of NY. Movements, dials, pendulums, case and/or case parts, or complete clocks... what have you. WAYNE VOUMALLIS. Ph: 954-559-9224
Email: waynevv@clockwatch.com

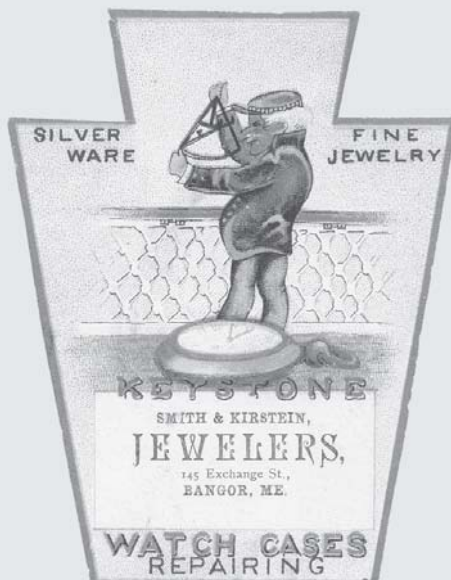
Ogee clocks w/political glass portraits of Van Buren, Jackson, Clay, Harrison purchased. Please send photos/email. MARK SUOZZI, P. O. Box 102, Ashfield MA 01330. 413-628-3241.
Email: marklyn@valinet.com

Collector would like to purchase a Welch Spring No. 6 (hanging Lucca) and/or No. 7 (hanging Patti). Please call SAM HOCKMAN. Ph: 570-333-4071.

WANTED for my collection. Ansonia floor model Regulator No. 11, Regulator No. 15 in walnut and must retain original finish. Paying as much as \$20,000 for either model in nice original condition. Please call me: 419-261-8434 or email me ehowardastro@aol.com. J. WESTLICK.

WANTED: CLOCK COLLECTIONS
JOE BREWER. Ph. 412-889-7734.
www.BrewersAntiqueClocks.com

WANTED: Clock collections. LEON-PAUL RICHMOND. Ph: 336-213-4577.
Email: oldtimekeepers@gmail.com



COURTESY OF NAWCC
LIBRARY & RESEARCH CENTER
POSTCARD COLLECTION

Watches Wanted

Buying pocket watches – one or complete collections, railroads, watchmakers' shops, parts, tools. No cherry picking! Willing to travel. PERRY SNIDER. Ph: 320-267-7782.

NAWCC BUSINESS MEMBER

I need 18-size hunting case Ball watches made by Aurora, Hamilton, or Hampden. Also need dial for a Ball indicator or a Ball inline demonstrator, or the complete watch. Please call DON BARRETT. Ph: 866-390-2242.

NAWCC BUSINESS MEMBER

Wanted: Chronograph movements and parts. Paying for Valjoux 69, 72, and 88 up to \$800. Venus 178 \$300. Longines 13 ZN 30 CH \$500. Movado 90 and 95 \$300. Also buying high-grade movements and parts. DEAN SARNELLE. 25 W. Beverly St., Staunton VA 24401 866-877-8164. onceuptime@aol.com

NAWCC BUSINESS MEMBER

SCHOLARSHIPS FUNDED BY THE MIDWEST REGIONAL AVAILABLE TO NAWCC MEMBERS

Do you need financial help to attend an NAWCC clock or watch repair course or seminar?

- Help may be available through the Midwest Regional's Scholarship Fund. Each year awards are given to qualified applicants.
- For an application or more information, email Mike Dempsey at: mike@clocksandthings.net
- Applications must be submitted by May 15 of any award year.
- Winners are announced at the National Convention of the award year and must be used within one year from the grant date.



**National Watch
& Clock Museum**
Apr.-Nov.,
Tues.-Sat. 10 a.m.-5 p.m.,
Sun. noon-4 p.m.
Memorial Day to Labor Day
also open Mon. 10 a.m.-5 p.m.



National Offices
Mon.-Thur. 8 a.m.-5 p.m.,
Fri. 8 a.m.-4 p.m.
Closed weekends.
514 Poplar Street,
Columbia, PA 17512-2130



Library & Research Center
Mon.-Thur. 8 a.m.-5 p.m.,
Fri. 8 a.m.-4 p.m.,
Sat. noon-4 p.m.
Closed Sunday.

WATCH COLLECTIONS WANTED
STEVE MITCHELL. 603-867-6277.
 Email: SMITCH1208@comcast.net

**BUYING SPECIAL PATEK PHILIPPE
 WRIST & POCKETS LISTED BELOW**

Collections large and small.

- Enamel dials Ref 2526 Ref 3402 w.w.
 - 30J screw back automatic w.w.
 - Platinum wrist or pockets
 - Odd fancy or unusual shaped round or rectangle wrists
 - Ladies' fancy pendant watches
 - Ladies' or gents' with enamel scenes on front & back p.w.
 - Chronograph wrist or pocket
 - Split seconds wrist or pocket
 - World Time Zones wrist or pocket
 - Up/down or winding indicators
 - Repeaters wrist or pocket
 - Any automatic screw back w.w.
 - Tutone-platinum or gold wrists
 - Victorian-style ladies' platinum with diamonds broach-necklace
 - Open-face fancy diamond bezel p.w.
 - Perpetual moonphase repeaters
 - Wrist or pocket with chronograph
- One-Day-Pay. Same phone no. 46 years.
 1-800-833-6453. Cell 502-314-1103.
 Postage paid both ways. TOM ENGLE.
 Email: tomengle11@aol.com

Collector wishes to purchase any sport Rolex dials. Chronographs, Daytona, Paul Newman, antimagnetic, early and rare, 1920s thru 1990s. Any Rolex GMT dial from the 1950s thru 1980s. Gilt to matte finish. Any Submariner dials from the early 1950s thru 1980s non-date or dates. Red Submariner. Red Sea Dweller dials & Milgauss dials. Please call GREG ESSES at 713-254-8191 or send to P. O. Box 542235 Houston TX 77254.

WANTED WANTED

Don's Watch Shop is buying all types wristwatches, pocket watches, LeCoultre, Hamilton, chronographs; all high-grade watches, movements, parts, findings, tools, equipment, old store stock, or complete repair shops.

DON ROBBINS, P.O. Box 416,
 1838 Monroe St., Sweetwater TN 37874.
 Ph: 423-337-7067; Fax 423-337-0172.

Email: dswatch@chartertn.net
 Before sending watches,
 please call for policies,
 procedures, and
 shipping confirmation!!

WANTED: Fusee watches.
PAUL RICHMOND. Ph: 336-213-4577.
 Email: oldtimekeepers@gmail.com

**BUYING RARE U.S. WATCHES
 AND RARE EUROPEAN**

- 14-Size Waltham Crystal Plate
 - 26J Benjamin Franklin
 - 26J Bunn Special
 - 26J Pennsylvania Special
 - 25J or 26J any U.S. Railroad
 - 23J 947 Hamilton Hunting Case
 - 23J 951 Hamilton Hunting Case
 - 23J The Edward Howard
 - 23J Premier Maximus Waltham
 - 23J 50th Anniversary Gruen
 - 19J Dudley 1st Model 14K
 - 18K One-Minute Repeaters
 - 18K Karrusels
 - 18K Tourbillons
 - 18K Enamels large size
 - 18K Pocket chronometers
 - 18K Perpetual moon phases
- One-Day Pay. Same phone no. 46 years
TOM ENGLE
 1-800-833-6453. Cell 502-314-1103.
 Email: tomengle11@aol.com

Collector wishes to purchase any split-seconds wristwatch. Rolex, Universal, Longines, Patek Philippe, Minerva. All brands considered. Stainless steel cases or 14K and 18K. Please call GREG ESSES at 713-254-8191 or send to P. O. Box 542235, Houston TX 77254.

NAWCC Workshops

**Brush up on your skills
 with a workshop
 this summer!**
**Check out www.nawcc.org
 for the latest workshop
 schedule as
 new clock workshops
 will be added.**
**Sign up early and
 receive the
 Early Bird Registration
 Discount!**

See the education section
 of www.nawcc.org for more
 information on these courses
 as well as other courses being
 offered throughout the year.

Beginner

Introduction to Clocks for the Beginner (WS-109)	July 14-18
Introduction to Machine Tools and Materials (WS-204)	July 21-25
Using the Micro Mill for the Beginner (WS-120)	July 26-27
Servicing a Pocket Watch for the Beginner (WS-111)	July 26-27 or Sept. 20-21
Servicing a Pocket Watch for the Beginner II (WS-201)	July 28-30 or Sept. 22-24
Dial Painting with Phil Gregory (WS-124)	Aug. 9-10
Introduction to Clocks for the Beginner (WS-109)	Aug. 18-22 or Oct. 27-31
Introduction to Machine Tools and Materials (WS-204)	Aug. 25-29
Stenciling on Glass (WS-125)	Sept. 27
Traditional Enameling (WS-222)	Oct. 4-5
Faux Finishing (WS-219)	Oct. 9-10
Clock Case Restoration (WS-110)	Oct. 11-12
Veneering and Marquetry Basics (WS-114)	Oct. 13
Wheel and Pinion Cutting on the Micro Mill (WS-119)	Oct. 25-26
Using a Jeweler's Lathe (WS-135)	Oct. 31-Nov. 2
Introduction to Machining-Build a Clock (WS-204)	Nov. 3-7

Intermediate

Basic Clock Repairs (WS-320)	July 28-Aug. 1 or Nov. 10-21
Servicing a Swiss Wristwatch (WS-230)	Aug. 15-17 or Oct. 27-29
Servicing a Quartz Watch (WS-225)	Oct. 24-26

Advanced

Staffing and Jeweling (WS-410)	Aug. 4-8
Using the Jeweler's Lathe II (WS-425)	Sept. 29-Oct. 3

Contact Katie Knaub:
education@nawcc.org.
Phone: 717-684-8261, ext. 237.
Fax: 717-684-0878



National Association of
WATCH & CLOCK
 Collectors, Inc.

BUYING ROLEX - VACHERON -
A. LANGE & SOHNE
WRIST AND POCKET

- Chronographs - Split Seconds
 - Repeaters quarter-minute-five minute
 - Moonphase repeaters with chronographs or split seconds & triple dates
 - Rolex Vintage 1950s thru 1970s stainless & gold GMTs Submariners
 - World Time Perpetual of any company
- TOM ENGLE 46 years. 1-Day-Pay
800-843-6453 (1-800-T E Engle)
Cell: 1-502-314-1103
Email: tomengle11@aol.com

Collectors, Businesses, Individuals
Wanted: watches, parts, tools, movements, old store stock, accessories, inventories, equipment, cases, dials, buckles, straps, bracelets, and anything horological; small collections to entire inventories. Can act quickly.

DAN BIXBY. Kansas City.
mbixbys@msn.com or 816-213-8437

Collector wishes to purchase any LON-
GINES chronographs from the 1920s
thru the 1960s. Steel, 14K or 18K gold.
13zn and 30ch movements. Please call
GREG ESSES at 713-254-8191 or send
to P. O. Box 542235, Houston TX 77254

AUTOMATA & MUSIC WANTED

- French mechanical musical dolls
 - Pocket watches
 - Musical and automata singing bird boxes
- KEN GOLDMAN, P. O. Box 920404,
Needham MA 02492. Ph: 781-326-7750.
Email: kengoldman@aol.com

WANTED

Any and all horological
watch and clock material!
If you're retiring, read this ad!!!
I am interested in purchasing one item
or your complete shop, especially
watchmakers' shops. I am currently
looking for complete watches, PW
movements, WW movements, balance
stuffs, stems, mainsprings, jewels,
crystals, cases, crowns, screws, material
assortments, bestfit assortments,
horological books, lathes, clocks, clock
movements, dials, cases, hands, weights,
etc. I will travel anywhere in USA and
Canada. I will not cherry-pick. I will
buy your complete inventory. Prompt,
discreet cash payment.

STEVE MITCHELL
Ph: 603-867-6277 or 603-224-6150
or email: SMITCH1208@comcast.net

Buying Clocks and Watches and Parts
TERRY RETTIG. Ph: 574-315-8138.
Email: trettig@nd.edu

ANYTHING ILLINOIS

Want to buy Illinois wristwatches,
dials, movements, and cases (complete
or parts) in any condition. Please call
714-552-3524 or mail to:
FRED FRIEDBERG, 5319 University
Dr., #610, Irvine CA 92612.
Email: fred@illinoiswatches.com

share what you know!

WHEN you volunteer time to the NAWCC,

you help educate fellow members and the general
public about the fascinating world of horology.

Members are needed in every area of interest and
every skill level. You can share your knowledge in
person or online.



VOLUNTEER OPPORTUNITIES

Online:

Writer/Blogger—Introduce members and the general public to
watches, clocks, tips, tricks, research, and history by writing for one
(or all) of the NAWCC publications, such as the *Watch & Clock Bulletin*
and watchnews.nawcc.org.

Ask an Expert—Research and answer tough questions as part of the
Watch & Clock Bulletin Answer Box, Library & Research Center, or on
the Internet at mb.nawcc.org.

In Person:

Gallery Docent—Introduce the world of timekeeping to visitors
through a tour of the collection. Guide school groups through
Museum exhibits, assist with hands-on activities, and help prepare
supplies for groups.

Library and Archives—Assist in processing materials for various
collections housed in the Archives and/or process new materials for
Reference, Lending Library, Special Collections, or help out at the
circulation desk.

Collections—Aid Museum staff with collections projects, such as
special exhibits, inventory, research, cataloging, and collections care.

Teach a Class—Instruct students (of all ages) on a particular area of
horology. Pass your knowledge to people who "want to know."



National Association of
WATCH&CLOCK
Collectors, Inc.

FOR INFORMATION CONTACT:
717-684-8261
or email education@nawcc.org

Other Wanted

Wanted: American pocket watch cases. All sizes. GF nickel, steel. Call or email prices. BILL HEGNER.

* Please note corrected phone number! * 408-355-5263 or ashwoof5@comcast.net

WANTED: STREET AND TOWER CLOCK EPHEMERA

Buying original catalogs, manuals, instruction sheets, correspondence, advertisements, trade cards, photographs, etc. related to American Street and Tower Clocks; in particular, E. Howard, Seth Thomas, Joseph Mayer, Brown Street Clock Company, and McClintock. Also pre-1930 *Jewelers' Circular*, *Keystone*, and jewelry supply catalogs. DON BUGH. Ph: 979-224-2681.

Email: d-bugh@suddenlink.net

WANTED: Welch No. 8 (Iron Baby Patti) case or case parts.

JERRY THORNSBERRY

816-522-6906 or jlthorns@yahoo.com

Pre-1900 clockwork toys, toy watch pocket banks, mech banks, Breguet watches. G. ZEMENICK. Cell: 248-561-2314 (EST).

WANTED

Any and all horological watch and clock material! If you're retiring, read this ad!!! I am interested in purchasing one item or your complete shop, especially watchmakers' shops. I am currently looking for complete watches, PW movements, WW movements, balance staffs, stems, mainsprings, jewels, crystals, cases, crowns, screws, material assortments, bestfit assortments, horological books, lathes, clocks, clock movements, dials, cases, hands, weights, etc. I will travel anywhere in USA and Canada. I will not cherry-pick. I will buy your complete inventory.

Prompt, discreet cash payment.

STEVE MITCHELL

Ph: 603-867-6277 or 603-224-6150 or email: SMITCH1208@comcast.net

WANTED: OLD WATCHBANDS, watch cases, and watch dials.

New Old Stock or Used.

TONY MAYFIELD. Ph: 816-250-2972

Buying Clocks and Watches and Parts TERRY RETTIG. Ph: 574-315-8138.

Email: trettig@nd.edu

WANTED

Clockmakers No. 2 Depthing Tool. Must be in good condition with box. J. BARRS. Email: jnbarrs@gmail.com

WANTED: ANTIQUE ELECTRIC FANS AND BIPOLAR MOTORS for early electric clocks. Will pay \$1,000s for names like Crocker-Wheeler, Edison, Crocker-Curtis, Holtzer-Cabot, Riess&Scott, USEL, Tesla, early lightbulbs, switches, sockets, catalogs, and anything pre-1900 electrical apparatus. Please call: 419-261-8434 or email: ehowardastro@aol.com. J. WESTLICK.

JEWELER'S LIQUIDATION is actively buying – looking for opportunities to aid watchmakers, collectors, jewelers, estates, or families seeking to sell or liquidate anything horological. We inventory collections from a few watches and/or tools to entire stores and we don't just pick select items; WE BUY IT ALL. If we don't buy it, we'll let you keep the inventory we've performed. Providing services since 1984. Contact C. COLBY.

Ph: 503-585-3744; Fax: 253-323-9912.

Email: 555colby@comcast.net



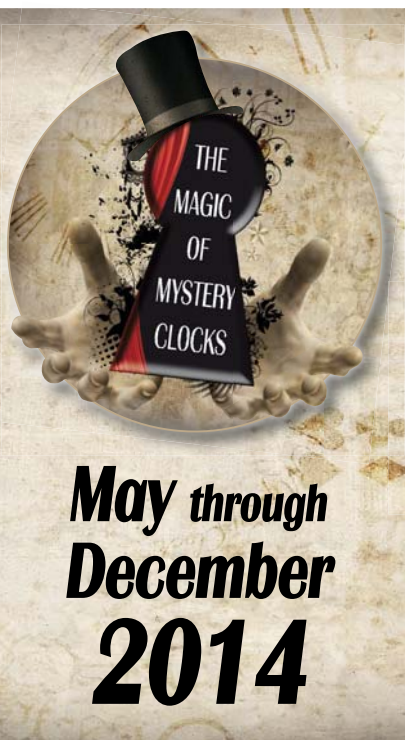
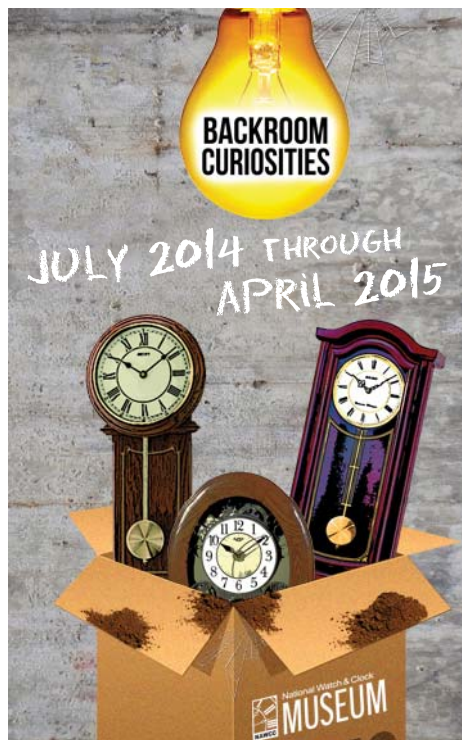
National Watch & Clock

MUSEUM

Hours

Apr.-Nov., Tues-Sat. 10 a.m.- 5 p.m., Sun. Noon-4 p.m.
Memorial Day through Labor Day also open Mondays 10 a.m.-5 p.m.

For information about programs and other educational opportunities, contact Director of Education Katie Knaub at 717-684-8261, ext. 237 or education@nawcc.org.



This summer bring your whole family to the

National Watch & Clock Museum



National Watch & Clock
MUSEUM
514 Poplar Street, Columbia, PA
Ph: 717-684-8261, ext. 237
www.museumoftime.org



Make-and-Take Workshops

Mondays
through August 25*

Drop by the Museum between
11:30 a.m. and 2 p.m. No reservations needed.

Children of all ages will enjoy creating their own clock to take home. Large groups of 10 or more should make reservations by calling 717-684-8261, ext. 237.

*Small fee required.
Not included in Museum admission.

WATCH COLLECTIONS WANTED
STEVE MITCHELL. 603-867-6277.
Email: SMITCH1208@comcast.net

OTHERS WANTED

- Buying any unusual 16th, 17th, and 18th century timepieces
 - Collections large or small
 - Any rare early watch by a famous watchmaker U.S. or foreign
 - Low serial numbers of important watches under S/N 100
 - Any U.S. company that made only a few watches in 1700s or 1800s
 - Any nice early watch boxes
- Postage paid both ways. One-Day Pay.
TOM ENGLE. Same phone no. 46 years.
1-800-833-6453. Cell 1-502-314-1103.
Email: tomengle11@aol.com

Purchasing American & European clockwork toys—models—animated penny banks—lead, wood, iron, or tin... Hand decorated or stenciled pull toys... Animated blinking eye clocks—iron or white metal... Advertising iron mantel clocks. Please send email/photos for current prices paid. MARK SUOZZI.
Email: marklyn@valinet.com

REGINA MUSIC BOX WANTED
ARNOLD LEVIN, 2634 Woodlawn Rd.,
Northbrook IL 60062.
Phone/fax: 847-564-2893
Email: mech999@flash.net

WANTED: 1-, 2-, or 3-weight Vienna, 72-beat movement on wood mount, 8-day or longer duration. ROBERT WEAVER. Cabinet Specialties.
Fredericksburg OH. Ph: 330-695-3463.

CLOCK COLLECTIONS WANTED
STEVE MITCHELL. 603-867-6277.
Email: SMITCH1208@comcast.net

Always buying broken, damaged, gold-filled, silver, gold, and platinum watch cases, chains, bands, and silver oxide batteries.

IRV BARD, G. F. SPECIALTIES, Ltd.
P. O. Box 170216, Milwaukee WI 53217
800-351-6926 goldfilledbuyers.com

Clocks for Sale

If you're passing through central PA on the way to the Syracuse show in August, come and see the largest selection of wt. regs., Viennas, tallcase, and double-dial clocks. Come and see why I might be your competition's best-kept secret!

G. SALTZGIVER. 717-308-1592.

Six antique tall clocks ca. 1650 and 1830. Two with sweep second hands, \$625 and \$800. Swinging arm clock on marble base, 5 feet tall. Near Lansing MI.

H. WITHAM. Ph: 989-277-9140.

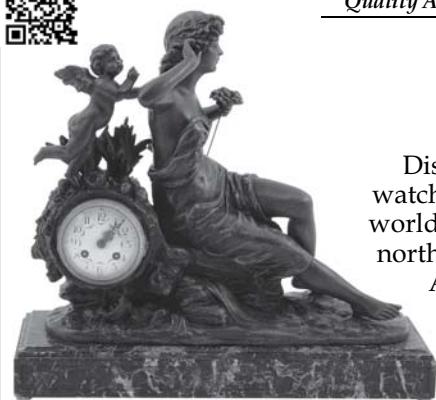
Parts available for antique Dutch clocks. Call toll-free 866-913-0177 or visit our website: antiquedutchclocks.com.

G. KOOLEN

Ansonia Diana swing clock, \$3,000. Exc. physical and mech. cond. PETE VANDER POEL. pjvp3@yahoo.com

Collection of over 80 clocks available. Mostly mantel - a few wall, American, and French. C. SCHMIDT.

Ph: 304-496-8227 (WV).



Quality Antique Clocks & Watches

Over 35 Years Experience

SOLVANG ANTIQUES
CALIFORNIA'S FINEST COLLECTIVE

Discover a wonderful selection of quality antique clocks, watches and music boxes at Solvang Antiques—located in the world famous Santa Ynez Valley wine country, just 30 minutes north of Santa Barbara on California's beautiful central coast.

A name you can trust, with over 35 years experience serving collectors & investors worldwide.

1693 Copenhagen Drive, Solvang CA 93463

805-686-2322 ♦ www.solvangantiques.com

Dwight Steffensen
Business Member



Merritt's

1860 Weavertown Rd.,
Douglassville, PA 19518

(610) 689-9541 Ext. 262

Toll free Fax for orders:

1-866-846-7789

Open Mon thru Fri.... 8:00 AM to 4:30 PM
Saturday... 9:00 AM to 2:00 PM

See our web site to see the latest antique clock and repair supply arrivals!



Our new 2014-2015 Catalog of Clock & Watch Repair Supplies, Books & Tools is available as of May 1...

\$5.00 postpaid Please send a copy...

Name: _____

Address: _____

City: _____ State: _____

Zip Code: _____

Copies are free with any order or antique clock purchase...
Please ask for your copy when ordering!

Merritt's
Serving the trade for over 75 years

2014-2015 Catalog of Clock & Watch Repair Supplies, Books, & Tools



www.merritts.com

www.merritts.com

Serving clock collectors and repairmen for over 75 years!

Birge & Fuller Wagon Spring Steeple on Steeple, 8-day with original dial, glasses, and wonderful makers label. STEVE PETRUCELLI. NAWCC member since 1974. Ph: 973-723-7947 (cell). Photos at: <http://www.adamsbrown.com>

SETH THOMAS JEWELER'S FLOOR REGULATOR. No. 14 with mercurial compensated pendulum, center sweep seconds hand and hinged storage in base. Marked No. 168, August 26, 1892. This clock is in pristine condition with original crank and key. Offers over \$24,000 considered. For pictures and further discussion contact: RON KOWALSKI. Bellingham WA. 360-756-2322 or ron.k@comcast.net



Watches for Sale

Cogs and Pieces. Online dealers of fine antique pocket watches. PETER HALL. Website: www.cogsandpieces.com

NAWCC BUSINESS MEMBER

Two-tone Breitling Evolution Chrono - S/S head w/gold markers, crown, and pushers and two-tone band; also box and papers. \$4,500. NORMAN TEWES. Email: normandeleonor-tewes@shaw.ca

Pocket watches, Ball, Illinois, Elgin, Hamilton, cases, and dials for sale. R. HANEWALD. Ph: 513-465-8562. vintagequalitypocketwatches.com

Rolex parts, bands, and buckles for sale. GORDON BUCKNAM 218 Sand Pine Rd., Indiatlantic FL 32903 Ph: 321-258-6253. Fax: 321-773-0369. Tues., Wed., and Thurs., 9-4, EST.

South Bend watches buy-sell-repair 42 years' exp. F. FOX, 3287 Sheffield Rd., Dayton OH 45449. 937-294-8868.

Fine Railroad Pocket Watches, Vintage wristwatches & hard-to-find parts. www.WatchesByHourMinSec.com BARRY HANSTEIN Ph: 636-352-3128

ANYTHING ILLINOIS Will sell or trade my duplicate Illinois wristwatches. Please contact FRED FRIEDBERG at 5319 University Dr., #610, Irvine CA 92612 or call 714-552-3524. Email: fred@illinoiswatches.com

www.rolexandtudor.com, 650-862-6385 www.paloaltomicro.com, DAVID WU Buy/Sell Rolex & parts, dpamc@aol.com



FIND YOUR PERFECT WATCH. PURCHASE FROM TRADERS WORLDWIDE.

LOOKING TO BUY A QUALITY NEW OR PRE-OWNED WATCH, OR WISHING TO SELL?

NO HIDDEN CHARGES, COMMISSION OR FINAL SELLING FEES.

FOR MORE INFORMATION CONTACT PAUL BRADY ON: PAUL@HOROLOGYTRADER.COM OR VISIT THE WEBSITE.



HOROLOGY
TRADER



www.horologytrader.com

help THE NAWCC GROW!

The following businesses and chapters are among those that distribute membership fliers to their customers and at events: Tom Harris Auctions, Skinner Inc., Chapter 124, Chapter 43, Chapter 48, Chapter 3 and Chapter 62. In total, this will result in the distribution of 16,843 fliers since 2010.

If you would like to distribute fliers with your customer orders or mailings to friends, relatives, and associates, please contact Member Services at membership@nawcc.org or call 717.684.8261

The membership application can be downloaded at www.nawcc.org/index.php/membership-flyer

