

TIMELY

CHRISTMAS 1960

TOPICS

All is calm, All is bright



# TIMELY

*Published by and for the employees of the Hamilton Watch Company.*

## Editor

Richard F. Charles

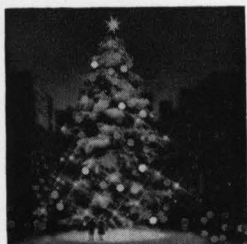
## Associate Editors

Eugene P. Barber, Industrial Products  
 Blake V. Dulaney, Sales  
 Robert C. Frey, Manufacturing Division  
 Arlene Hershey, Public Relations  
 Edward L. Jones, Advertising  
 Albert J. Kleiner,  
 Manufacturing Division  
 Harold H. Quickel, Purchasing  
 Thomas D. Reese, Public Relations  
 Chris Steckervetz,  
 Military Products Division  
 Carl A. Yecker,  
 Industrial Engineering Division  
 Bernard Zener,  
 Plant Engineering Division

## Reporters

Wally Bork	Charles McCarney
Sally Bushong	Heinz Moor (Switzerland)
Max Caldwell	Ray Musser
Ray Ellis	John Nies
Ed Fechter	Doris Ober
Ira Fickes	Norma Palumbo
John Fry	Frank Remley
Sam Gast	Ronald Roschel
Joe Grubb	Art Schneider
Gerry Hassan	John Snader
Marilyn Kuntz	Laura Snavelly
Helen Kupp	Joe Staab
Ira Mann	Helen Witmer

## OUR COVER



Perhaps many have recognized our cover as the Hamilton Christmas advertisement in several national magazines. TT is grateful to the advertising department for its use.

## IN THIS ISSUE

It All Spells Christmas .....	4
The Lancaster Plant Dresses Up .....	6
Christmas Quiz .....	7
'Twas the Day Before Christmas .....	8
Business and Youth, Partners in Progress .....	10
A Quaker's Letter to His Watchmaker ..	11
Noted .....	12
Honor Roll Changes .....	15

## *A Double Wish*

This message carries a double greeting. The first is a Christmas wish from the TIMELY TOPICS staff for a holiday filled with all the good things the season can bring to each Hamilton family. It is always a pleasure to repeat this familiar greeting with added warmth for the New Year.

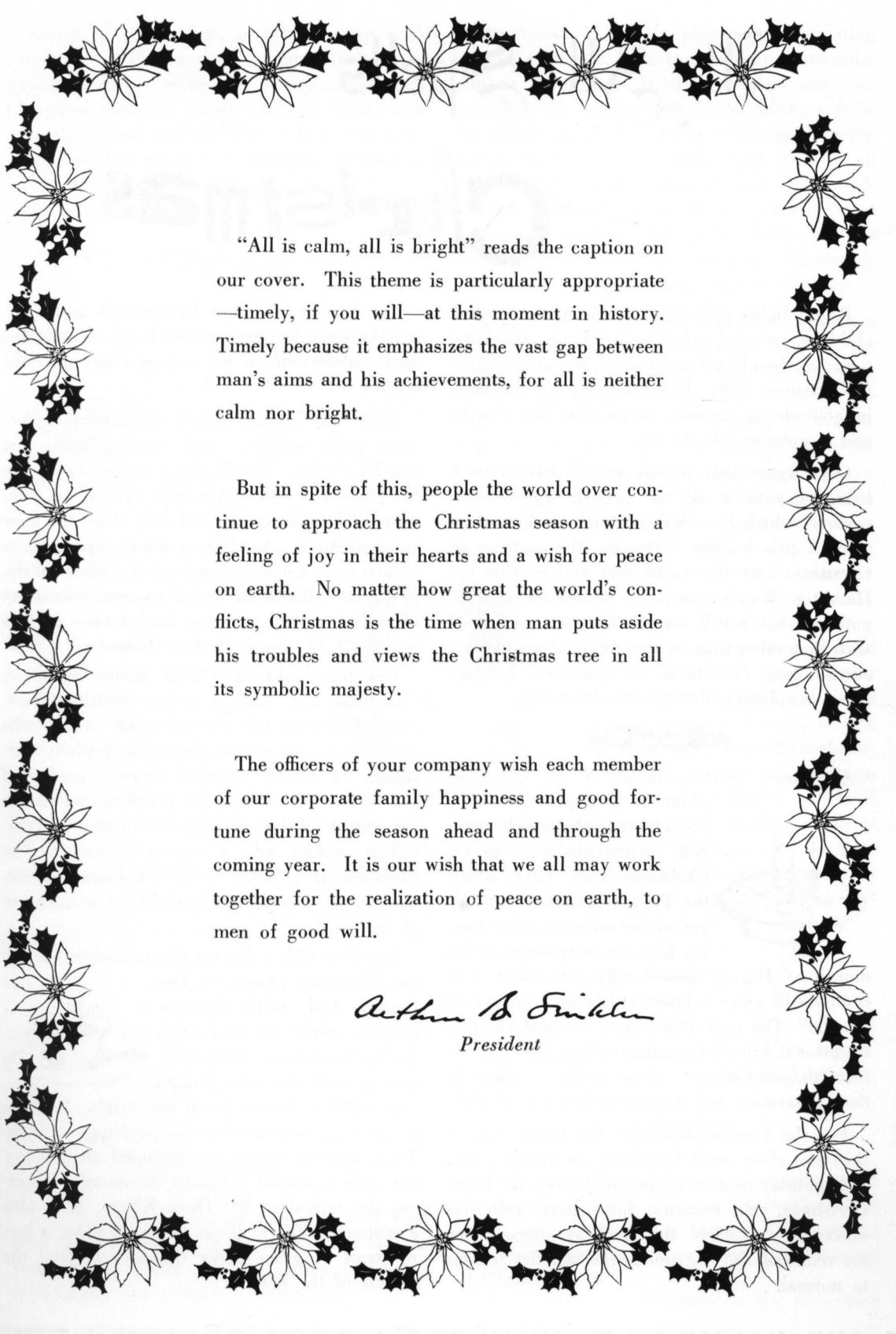
A second greeting comes from your new TIMELY TOPICS editor. To the Christmas wishes of the editorial staff, I would like to add a personal "hello" to all my fellow employees. Of particular note is the gift which Hamilton people have for making a newcomer feel right at home. The friendly manner and welcome smile exhibited by all virtually eliminated the usual feeling of strangeness which a new employee might expect.

Perhaps a word concerning future plans for TIMELY TOPICS would be in order. The editorial objective is set forth in the motto at the top left corner of this page: "Published by and for the employees of the Hamilton Watch Company." Its success will be measured in terms of how well we fulfill this aim.



Dick Charles, Editor





"All is calm, all is bright" reads the caption on our cover. This theme is particularly appropriate—timely, if you will—at this moment in history. Timely because it emphasizes the vast gap between man's aims and his achievements, for all is neither calm nor bright.

But in spite of this, people the world over continue to approach the Christmas season with a feeling of joy in their hearts and a wish for peace on earth. No matter how great the world's conflicts, Christmas is the time when man puts aside his troubles and views the Christmas tree in all its symbolic majesty.

The officers of your company wish each member of our corporate family happiness and good fortune during the season ahead and through the coming year. It is our wish that we all may work together for the realization of peace on earth, to men of good will.

*Arthur D. Finkler*  
President

Buon Natale e buone Feste del Capo d'Anno Merry Christmas

It All Spells

# Christmas

Bright lights glittering, joyous music, excited children, colorful gifts, festive foods, sparkling trees: all herald the excitement and anticipation of Christmas 1960. In our homes, our churches, in solitude or crowds, peace fills our hearts, and happiness fills the air.

Once again this joyous season has arrived, bringing with it all the ancient legends and customs which have become such an important part of this holiday. Because the customs of Christmas vary the world over and because the Hamilton Watch Company is international in nature, what better way to become acquainted with each other than by describing the traditions surrounding Christmas as practiced by our many employees throughout the world.



Cookshire, Quebec, home of the Canadian plant, is in a predominantly French area. Quebec churches hold midnight services on Christmas Eve, after which the French-Canadian families gather for reunions often lasting into the early hours of the morning. During these family gatherings, it is common to serve a famous delicacy, "paté a la viande." The paté a la viande or meat pie is a traditional French-Canadian recipe, passed down through generations. Great pride is taken in the preparation and serving of this special dish.



For the French-Canadians, the festive season does not close until Epiphany on January 6th. This holiday is more commonly known as "Little Christmas," an occasion for special religious observances. After this holiday, decorations are removed and life among the families returns to normal.

The home of Wallace Silversmiths and Puritan Fireplace Equipment, Wallingford and Milford, Connecticut, is an area of many national origins.

From the English comes the famous home-made plum pudding, with brandy, mince pie and fruit cake. The English roasted gray goose has given way to the American turkey, but residents of English origin still sing about the gray goose custom. An Italian dinner specialty is cooked veal, a dish originating in southern Italy. A special coffee drink called poncino, consisting of coffee, spirits, anisette, and lemon peel is consumed in many of these homes.

Festivities with a Polish flavor begin on Christmas Eve with a family meatless feast. Such things as bak-a-bread, made with fruits and raisins, along with pierogi, a specialty consisting of dough wrapped around pre-boiled concoctions of cabbage or potatoes and cheese are served. Other delights are pickled herring, Polish cookies and a variety of cake. The Christmas Day dinner includes kalbasa, a home-made pork sausage with baked ham as a feature of the meal.

Families with a Puerto Rican tradition begin the Christmas season on December 15th with church services which are held daily during the season. Following church each day, the groups visit different houses to eat and drink. All this, by the way, occurs before the people go to work. Their holiday season is concluded on January 6th with a special religious ceremony celebrating the arrival of the Three Kings. It is also a custom in Puerto Rican homes to place a box of straw or grass under the beds to feed the camels of the Kings.



Glückliches Neues Jahr Buon Natale e buone Feste del Capo d'Anno Merry Christmas

dzenia i Novego Roku Frohliche Weihnachten und ein

# and Happy New Year

*Felices Pascuas Feliz Ano Nuevo*

Kilach, a pastry loaf, and long crisp rolls consisting of cheese, nuts, prunes, apricots or poppy seeds, is served in Hungarian homes. Christmas dinner is usually chicken stuffed with a parsley bread and egg mixture boiled to make soup and then roasted for serving. Christmas Eve religious services are held at which time children recite Christmas stories by candlelight.



Bienne, Switzerland, a city of 60,000 people, is the home of A. Huguenin Fils, S.A., Hamilton's Swiss subsidiary. Christmas fever begins the third Saturday before December 25th, with a visit by Santa Claus to the Swiss children. This visit serves as a warning to the child that Christmas is approaching.



Christmas itself is celebrated on the evening of December 24th with the appearance of Christkind, the Christmas angel, and the exchange of gifts within the family. Later they attend a midnight religious service. There is little decoration of homes or stores, although some communities erect a large decorated tree in the square. A gaily decorated pine tree, lighted entirely by candles, is found in most homes. The Christmas meal itself usually consists of a roast of beef, pork or veal rather than the traditional American dish of fowl.

While Christmas is a time for home and family, New Year's Eve for the Swiss is a time for gay and happy gatherings. Parties, called Sylvesters, are held in clubs and taverns with general merrymaking for all. The Sylvester is climaxed at midnight when the lights are dimmed, kisses exchanged, and sometimes a small pig, representing good luck throughout the coming year, is released into the crowd.

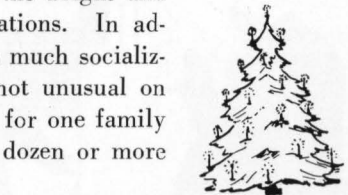


The Hamilton plants in Lancaster and East Petersburg are located in the heart of the famous Pennsylvania Dutch Country where Christmas celebrations are a study in contrasts.

The Amish, one of the plain sects originating in rural Germany, have rejected any ornamentation or decoration. Church services are conducted in the homes with Bible readings from the Christmas story. Gifts are exchanged among Amish families and neighbors with girls of all ages receiving pottery, flatware and other items for their hope chests, while boys receive farm implements such as milk pails, shears, shovels or an ax. Married folks exchange handmade articles such as quilts, rag rugs or clothing.

A most unique custom of this area, originated by Moravians, is the building of a Christmas Putz. The Putz is a series of scenes depicting the episodes of the Nativity story. Each scene is lighted individually and narrated to give the impression that the figures themselves are speaking. Fifteen different scenes, approximately two to three feet square, are displayed individually each evening during the Christmas season. Figures used in the Putz are hand carved by the passion players in Oberammergau, Germany, and imported by the Lancaster Moravian Church.

Most homes in Lancaster city and county have some form of exterior decoration, ranging from individual door sprays tied with a gay bow to complete home exterior lighting. Occasionally, local civic groups sponsor competition for the most attractive outside display in which individual homes or whole groups of homes may compete for a prize. Many a happy evening is spent by local residents traveling through the countryside admiring the bright and colorful decorations. In addition, there is much socializing and it is not unusual on Christmas Eve for one family to visit a half dozen or more homes.



Traditions differ widely among employees of the Hamilton Watch Company throughout the world, but all have one thought in common: to observe, each in his own way, the meaning of Christmas.

*Illustrations by Mrs. Marie Seiger*

Joyeux Noel et Bonne Annee

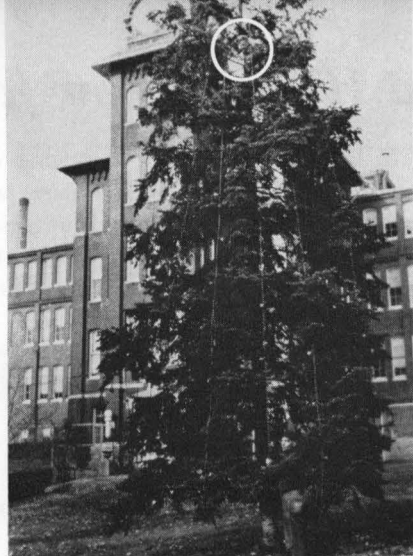
Boldog Karacsöny Boldog Új Er

Jolly

Szczesliwego Bozego Naro

Christmas and Happy New Year

# The Lancaster Plant Dresses Up



Hard at work stringing lights are Harry Brenneman and Raymond Fritch (Circle).

Decorating the factory for Christmas is a tradition in which Hamilton people have prided themselves for more than 50 years. Dating back to 1908, the Hamilton Watch plant in Lancaster has brightened the community each year at Christmastime with a gay display of colored lights on the evergreen trees located on its "campus."

In 1924 the first elaborate display was erected and became an annual tradition which is considered a seasonal attraction to residents and tourists in the Lancaster area.

Unfortunately heavy snows during the past few years have caused considerable damage to the Hamilton evergreens. Many trees have had to be removed, while others have required extensive pruning on the lower branches.



G. E. Shubrooks, assistant to the vice-president, and Mose Good, maintenance foreman, throw the switch lighting the Lancaster plant's display.

Although the number of evergreens available for decorating has been reduced, this year over 1,000 gaily colored lights illuminate the trees within the Hamilton grounds. A large lighted tree erected over the entrance to the main office, decorative pine roping up and down the pilasters and looped across the top of the building complement five candles on each side of the main walk which add the artist's touch to this brilliant display.

Music was introduced with the addition of a brass quartet serenading Hamilton employees during the decade from 1928 to 1938. A fish pond was then located in the area of what is now the main office building. Three times a day, unmindful of rain, sleet, or snow, this quartet met "at the pond" to melodize joyous carols instilling the Christmas spirit in all the passers-by. As might be expected the group was affectionately dubbed "The Fish Pond Quartet."

Members of the quartet were Bill Hartman, Alfred Belich, Miles Lacey, Carl French and their leader, Pop Leary. Hartman is the only member of the group who is still an active employee.

The three trombones and a trumpet finally gave way to our present music system with recorded selections played through two large speakers located on the southeast and southwest corners of the main office building. No one is really sure why this quartet broke up, but it has been said they lost all inspiration when the fish pond was removed.





**Christmas is a happy time, a season rich in custom and tradition—glittering with legends and myths from all over the world. How well do YOU know your Christmas facts?**

1. The words to the Christmas Carol "Silent Night" were written by—  
a. school teacher b. soldier c. priest d. rabbi
2. The custom of the Christmas tree originated in what country?  
a. Germany b. France c. England d. Belgium
3. How many reindeer pull Santa's sleigh? (Not counting Rudolph)  
a. 12 b. 8 c. 6 d. 10
4. The lords of one large country originated the custom of rewarding carolers by flinging gold to the serfs who sang for them. What country was this?  
a. Brazil b. Japan c. Russia d. America
5. "'Twas the night before Christmas" begins a famous poem. What is its title?  
a. Santa Claus Comes b. A Visit from Saint Nicholas c. All Is Bright d. A Christmas Scene
6. Children of Holland and Belgium receive gifts in their shoes while they sleep. What South American country also practices this custom?  
a. Mexico b. Chile c. Brazil d. Argentina
7. Who wrote the now-famous song "White Christmas"?  
a. Bing Crosby b. Paul Whiteman  
c. Irving Berlin d. Oscar Hammerstein II
8. Mistletoe was considered a symbol of hope and peace. If enemies met under it, they laid down their arms, kissed each other, and declared a truce. What ancient civilization held this belief?  
a. Egyptian b. Chinese c. Roman d. Druid
9. Charles Dickens wrote his "Christmas Carol" in 1842. This revived interest in holiday celebrations and produced the first Christmas cards. In what country were the first cards mailed?  
a. France b. England c. Turkey d. Russia
10. The "Portuguese Hymn" is actually a favorite Christmas carol. Which carol is it?  
a. "The First Noel" b. "O Holy Night"  
c. "O Tannenbaum!" d. "Adeste Fideles"

#### YOUR SCORE

If it's 8–10, you're brighter than Rudolph's nose.

If it's 6–7, you win a team of reindeer, complete with harness.

If it's 4–5, you win two sprigs of mistletoe.

If it's less than 4, you get Santa's empty pack.

*See answers on page 11*

(Right) Ray Sams, Plant Engineering, "checks" the trains before his son Craig monopolizes them tomorrow.



(Left) With the children safely in bed (we hope) Earl Eshelman, Machine Shop, and his wife Mary, wrap gifts for under the tree.



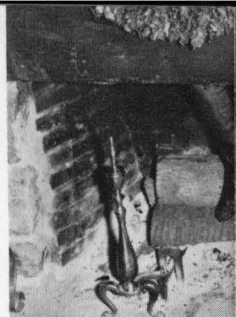
(Left) Santa won't go hungry on this year's trip: Jimmy and Judy Stauffer prepare a snack for him before going to bed. They are the children of Allegra Stauffer, East Petersburg.



(Left) The stockings are hung by the chimney with care by Randy Kochel under the watchful eye of sister Nancy. Their dad, Fred Kochel, is in the Plate Department.



(Right) Santa will get a bright welcome here as Dorothy and Bob Kopp, Machine Shop, with their children Mark, Marilyn and Karen decorate their family room.



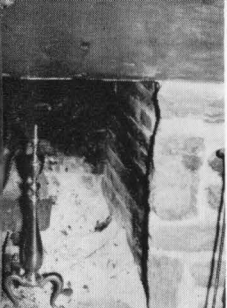
... and fin

# 'T th Day Before

(Below) No matter how gift was not purchased. teria, and her daughter with the help of Watt







Sally Santa.

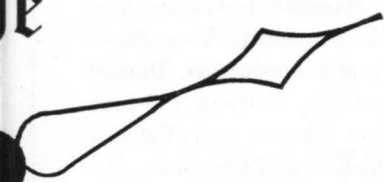


(Left) "Anyone we forgot?" asks Emma McMurtrie as she and "Queenie" find their mailbox filled with greetings on the final delivery. Emma is the wife of Ken McMurtrie, Quality Control.



(Right) "A doll, a carriage, a guitar, a . . ." says Debra Hershey as she places her last minute requests. Debbie is the daughter of Dick Hershey, East Petersburg.

as  
e



(Right) "Is THIS big enough?" Ed Jones, Advertising, gets final approval from Ed, Jr. and Cathy before cutting down their Christmas tree.



# Christmas

(Right) THESE cookies aren't for Santa but for the man of the house. Ruth Trout keeps husband Ike, Service, well supplied during the holidays.

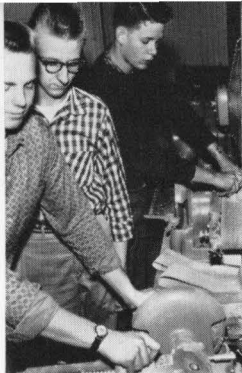


well you plan, someone's Carolyn Buckwalter, Cafe-Cathy solve a gift problem Shand clerk Sally Smith.



(Left) If you've forgotten that gift for Great Aunt Tillie, you, too, will have to brave the last-minute crowds.





Dick Gable, production manager (center) supervises the work of Bob Conn (l) and John Furry (r).

## Business and Youth . . . Partners in Progress

**Hamilite Industries thrives as educational partnership between Hamilton Watch Company and Lancaster teenagers**

A brand new Lancaster enterprise is well on its way to success thanks to the cooperative efforts of 19 local high school students and the Hamilton Watch Company.

Hamilite Industries, manufacturer of the "Famous Hamilite Decorator's Light," is the name of the Junior Achievement company sponsored by the Hamilton Watch Company this year. The basic purpose of a Junior Achievement company, as stated in the motto of Junior Achievement "Business and Youth—Partners in Progress" is to give teenagers of high school age a first hand experience with the principles and problems of the American free enterprise system.

To do this, a group of teenagers under the sponsorship of a local company, in this case Hamilton Watch, organize a business, sell stock, elect officers, manufacture and market a product, pay a dividend and dissolve the company all in the course of one school term.

Employees at the Lancaster plant got a first-hand view of Junior Achievement in action when the products of Hamilite Industries were on display in the cafeteria several weeks ago. A report from the Achievers tells us that the visit was a most successful one from the standpoint of sales.

Early in the year, before the final decision concerning the design of the Famous Hamilite was made, the achievers conducted an experiment in market research in which a door to door interview program provided a sampling of 50 to 60 local homes. From this research a definite program of manufacturing, product design and sales technique was devised.

The Famous Hamilite is designed to be used as a night light, mantelpiece display or in conjunction with flowers for a table centerpiece. Three price ranges are available, from \$3.50 to

\$4.50 and a total of nine different base-and-bulb combinations can be purchased. Selections are now on display at the jewelry store in the lobby of the main office building.

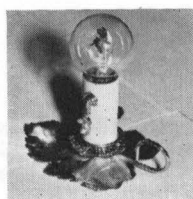
Hamilite Industries was capitalized with 215 shares of stock at \$.50 each. The company has a total of 79 stockholders, with regulations specifying that no one may hold a block of more than 5 shares. The stock itself was sold to friends of the Achievers, parents, and through a door to door campaign.

Officers of Hamilite Industries are: Carl J. Frank, President; Vice President for Sales and Production, Donald Gregg; Secretary, Patricia Cavana; Treasurers, Sue Clerico and Patricia Hogarth. Thomas J. Monaghan, Jr., has been named Sales Manager and Richard Gable, Production Manager.

Advisors to the group from Hamilton are: Robert A. Anderson, Assistant Comptroller—Budget, C. Edward Hendrix, Manager of Material Sales and Service, and Robert Frey, Manager of Production Planning.

Other students participating in the Hamilite Industries are: Robert Conn, John B. Furry, William T. Krous, Michael Nicklaus, Jack Ries, Raymond Sullivan, Paul C. Kershner, Frances Geiger, Pamela Geraghty, Karen Kehoe, Rosalie Kreider, Jacqueline Meisky, Dolores Pletcher and Joanne Preister.

Marie Seiger, Personnel, places her order with Hamilite president Carl Frank. Ed Hendrix, Material Sales and Service, watches while Pam Geraghty and Tom Monaghan look for new prospects.



The Famous Hamilite



# A Quaker's Letter To His Watchmaker

"I send thee once more my erroneous watch, which wants thy speedy care and correction. Since the last time he was at thy school, I find, by experience, he is not benefited by thy instruction; thou demandest the fourth of a pound sterling, which thou shalt have, but let thy honest endeavors first earn it. I will board him with thee a little longer, and pay for his table if thou requirest. Let thy whole endeavors and observations be upon him, for he has mightily deviated from the principles of truth; I am afraid he is foul in the inward man—I mean his springs. Prove and try him well with thy adjusting tools of truth, that if possible he may be drawn from the errors of his ways. By the index of his tongue he is a liar, and the motion

of his body is ever variable and uncertain. I presume his body is foul, as I have observed; therefore brush him well with thy cleansing instruments from all pollutions, that he may vibrate with regularity and truth; admonish him friendly and with patience, and be not too hasty and rash with thy correction, lest, by endeavoring to reduce him from one error, thou shouldst fling him headlong into another, for he is young and of malleable temper; he may, with due correction, be brought into the path of truth. In fine, let him visit often the motion of the sun, and regulate him by his table of equation; and when thou findest them to agree, send him home with thy bill of moderation, to thy friend Tobias Gowell."

*Farm Implements Magazine, 1888 Courtesy of American Heritage*

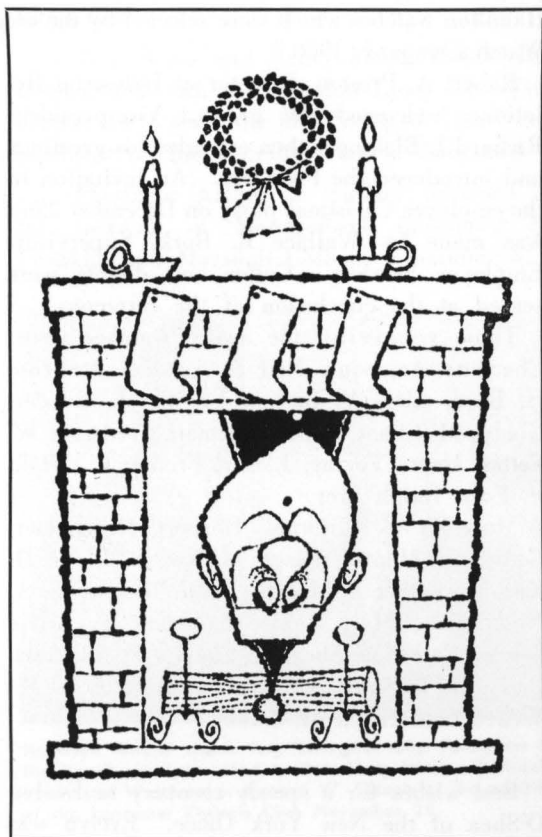
## New Timers



- Robert born to Karl R. and Patricia Lefever . . . October 29, St. Joseph's Hospital . . . Karl is employed in the Maintenance Department.
- Janet D. born to Stan and Pearl Feld . . . November 1, Lancaster General Hospital . . . Stan is a Methods Engineer.
- Michel S. to Charles and Ruth Braun . . . November 9, St. Joseph's Hospital . . . Charles is with the Advertising Display Shop.
- Kevin Thomas to Tom and Sue Reese . . . November 10, Lancaster General Hospital . . . Tom is a member of the Public Relations Staff.
- Donald P., Jr., to Don and Doris Hagerty . . . November 29, St. Joseph's Hospital . . . Don is in the Chemistry Department.
- Debra Lynne to Herman and Patricia Weeks . . . November 29, Lancaster General Hospital . . . Herman is employed in Chemistry.

*Answers to quiz on page 9*

1-c, 2-a, 3-b, 4-c, 5-b, 6-c, 7-c, 8-c, 9-b, 10-d







## Hamilton Watches Awarded to 28 For Fifteen Years' Loyal Service

The Hamilton Fifteen Year Club initiated twenty-eight new members with a watch presentation program December 12th in the Hamilton auditorium. President Arthur B. Sinkler awarded the Hamilton watches which were selected by the employees and engraved "For Loyal Service, Hamilton Watch Company, 1960."

Robert A. Preston, Director of Industrial Relations, welcomed the group. Vice-president Richard J. Blakinger then extended his greetings and introduced the President. An invitation to the employee Christmas party on December 22nd was made by Wallace R. Bork, Supervisor, Employee Services. Coffee and donuts were served at the conclusion of the ceremony.

Those receiving the award watches were: Charlotte Angevine, Ned S. Aurand, Ambrose H. Bard, Alma V. Basher, Pauline E. Bender, Gladys M. Chant, Gene Eshleman, Frederick W. Fetter, Harry Forrey, J. Carl Frederick, Gerald P. Frey, Ralph Frey.

Murena B. Gillums, Herbert Hilkemeier, George H. Hoover, Lester M. Kachel, Lloyd H. Kreider, Esther P. Morris, Edith Nelson, Ian A. Nightingale, Mary Louise Sabinash, E. Marie Seiger, Catherine Sheaffer, Charles P. Shekart, Catherine E. Smith, Gloria G. Strantz, Ethel W. Weaver and Helen M. Zeller.

\* \* \*

Best wishes for a speedy recovery to Evelyn O'Shea of the New York Office. Evelyn was



Senior Painter Lyman Foltz receives his check for a double suggestion award from G. E. Shubrooks, assistant to the vice president. Foltz received his award for two suggestions, one which suggested the use of a wooden wedge to shut off water spray from sprinkler heads and the other for a method to reduce wear on venetian blind cords.

admitted to the Overlook Hospital, Summit, New Jersey, for an operation. Everyone will be looking forward to seeing her smiling face after a brief recovery period.

\* \* \*

Congratulations to Joseph Granville Goff III who married our Barbara Ann Harmon, November 13, in Vienna, Va. Barbara was Phil Lichty's secretary.

noted...



## Hamilton Watches Awarded to 28 For Fifteen Years' Loyal Service

The Hamilton Fifteen Year Club initiated twenty-eight new members with a watch presentation program December 12th in the Hamilton auditorium. President Arthur B. Sinkler awarded the Hamilton watches which were selected by the employees and engraved "For Loyal Service, Hamilton Watch Company, 1960."

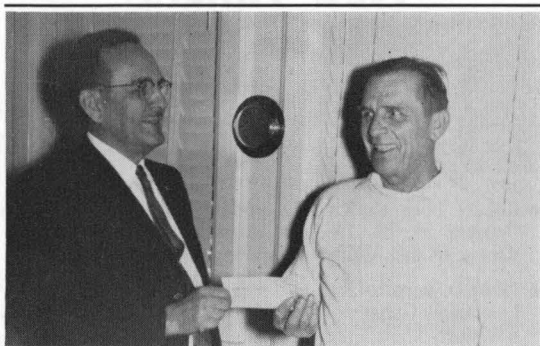
Robert A. Preston, Director of Industrial Relations, welcomed the group. Vice-president Richard J. Blakinger then extended his greetings and introduced the President. An invitation to the employee Christmas party on December 22nd was made by Wallace R. Bork, Supervisor, Employee Services. Coffee and donuts were served at the conclusion of the ceremony.

Those receiving the award watches were: Charlotte Angevine, Ned S. Aurand, Ambrose H. Bard, Alma V. Basher, Pauline E. Bender, Gladys M. Chant, Gene Eshleman, Frederick W. Fetter, Harry Forrey, J. Carl Frederick, Gerald P. Frey, Ralph Frey.

Murena B. Gillums, Herbert Hilkemeier, George H. Hoover, Lester M. Kachel, Lloyd H. Kreider, Esther P. Morris, Edith Nelson, Ian A. Nightingale, Mary Louise Sabinash, E. Marie Seiger, Catherine Sheaffer, Charles P. Shekart, Catherine E. Smith, Gloria G. Strantz, Ethel W. Weaver and Helen M. Zeller.

\* \* \*

Best wishes for a speedy recovery to Evelyn O'Shea of the New York Office. Evelyn was



Senior Painter Lyman Foltz receives his check for a double suggestion award from G. E. Shubrooks, assistant to the vice president. Foltz received his award for two suggestions, one which suggested the use of a wooden wedge to shut off water spray from sprinkler heads and the other for a method to reduce wear on venetian blind cords.

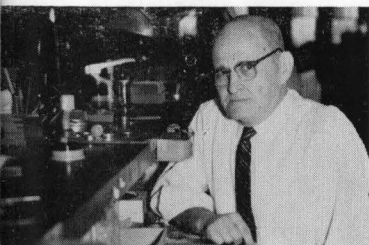
admitted to the Overlook Hospital, Summit, New Jersey, for an operation. Everyone will be looking forward to seeing her smiling face after a brief recovery period.

\* \* \*

Congratulations to Joseph Granville Goff III who married our Barbara Ann Harmon, November 13, in Vienna, Va. Barbara was Phil Lichty's secretary.

## RETIRED

**John Griffin**, Watch Assembly, retired on December 1, after almost 32 years with the company. Mr. Griffin, who for the past five



years has been an import caser in Watch Assembly, began his service with Hamilton in 1928, when the company purchased the Illinois Watch Company. He had

been with Illinois since 1912 and moved to Lancaster in 1934.

Mr. Griffin says his recreational hours are devoted mainly to enjoying sports as an avid baseball and football fan. He is a native of Springfield, Ill., but has resided in Lancaster for 26 years. His home is at 732 North Pine Street.

## General . . .

. . . Hamilton was an exhibitor at the Magnetic Material Conference and Exhibit, November 14-17, in the New Yorker Hotel, N.Y.C. The company was represented at the show by L. A. Hurwitz (Director, Metals & Electronics), H. L. Hovis (Ass't Director, Metals), M. S. Walmer (Supervisor, Metallurgy and Electronics), R. M. Jackson (Ass't Director, Electronics), and W. Shuttleworth (Sr. Metallurgist).

. . . Ruth Hess (Cafeteria) has been on sick leave from the company for the past several weeks. She wishes to send her thanks and deepest appreciation to her many Hamilton friends who, through cards, flowers and gifts, expressed their thoughtfulness during her stay in the hospital.

. . . "Sweethearts on Parade," a fashion show and card party, will be presented February 14 for the benefit of Heart Haven. Sponsored by the Newcomers Club, the event will be held at the Hotel Brunswick. The club president is Mrs. Bud Roush whose husband is an engineer at the East Petersburg plant.

## SPEAKERS . . .

. . . Ed L. Jones, Manager, Consumer Advertising, was a speaker and panelist at the Keystone Conference of American Women in Radio and TV, November 5-6, at the Penn-Harris Hotel, Harrisburg. Jones addressed the group on Hamilton's "good music" radio programming.

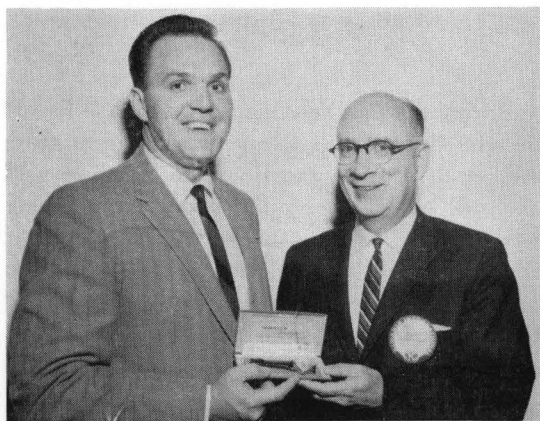
. . . Harry L. Hovis, Ass't Director of Metals, spoke November 14, before the Rochester Chapter of the American Society for Metals, Rochester, N. Y., on the subject, "Heat Treating of Instrument Parts and Metals for Electronics Application."

. . . Dr. John A. Van Horn, Director of Research, was the speaker at the "Hamilton Night" meeting of the American Society of Mechanical Engineers, November 7, at Meadow Hills Dining House. Van Horn addressed the members on "The Mechanical Development of the Hamilton Electric Watch."

. . . Robert V. Hartman, Merchandising, spoke on Hamilton and presented the film, "Ages of Time," at the December 1 meeting of the Lititz Lions Club.

. . . Tom Reese and Henry Flood, Public Relations, met with the Blandon Lions Club November 14 to show the film "Ages of Time" and comment on the Hamilton Watch Company.

. . . President Arthur B. Sinkler presided at the Institute of Management sponsored by Franklin and Marshall College, November 4.



Hamilton Award watch for "Lancaster City Policeman of the Year" was presented to Patrolman Walter T. Goeke by Master Watchmaker Richard W. Slauch at the meeting of the Lancaster Kiwanis Club November 29.



n o t e d . . .

## From Our Swiss Correspondent

### Employee Xmas Party To Be Held Dec. 22

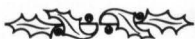
The annual Hamilton employee Christmas party will be held December 22 at noontime in the cafeteria, according to Wallace R. Bork, Supervisor of Employee Services.

A special feature of the party will be the return of retirees who, along with those who recently received their 15-year awards, will be treated to dinner. The menu for the day will be turkey with all the trimmings.

The Hamilton Chorus will present a selection of seasonal songs titled "Music for a Happy Holiday." President Arthur B. Sinkler will extend Christmas greetings from the company after which there will be carol singing by the group.

The entire program will be broadcast over radio station WGAL from 12:00 noon to 12:30 p.m. on December 22 and will be rebroadcast at the same hour on Christmas Day.

In the afternoon a special program has been planned for the retirees in the Hamilton auditorium. At this time the Hamilton film, "Ages of Time" will be shown and life memberships in the Hamilton Recreation Association will be awarded.



During the past year many guests have toured the Hamilton Watch Company. Some of these are jewelers, some are Hamilton watch owners and still others are simply interested in seeing how a quality watch is produced. But no matter what the reason may be, these people have been in contact with employees in the factory during the course of their tour.

The guides for these tours have asked **TIMELY TOPICS** to express their appreciation to those employees who have been so helpful and courteous to the visitors. They feel the tours would not be successful without the employees' co-



Jules Monnier, left, foreman in the casing and dial department, receives congratulations from Henry Huguenin at the Swiss plant. Mr. Monnier celebrated his 74th birthday and 20 years of service on November 28th.



Roger Morf, left, foreman in the automatic assembling department, receives a warm greeting from Albert Matzinger, head watchmaker at the Hamilton plant in Bienne, Switzerland. Mr. Morf celebrated his 50th birthday along with 31 years of service on the same day.

---

operation. A friendly smile or hello, as well as many comments on their jobs or the machinery they operate, have provided the visitor with a feeling of friendliness at Hamilton.

As one guide put it, "The employees are our best good will ambassadors."



# HONOR ROLL CHANGES

**November-December 1960**

## **40 years**

ELSIE DULL, *Movement Assembly*  
LEAH E. ESHLEMAN, *Train*  
WALTER PLANK, *Movement Assembly*

## **35 years**

M. LOUISE GOOD, *Train*  
EDWARD J. MILLER, *Product Stocks*  
MAUDE E. KENDIG, *Movement Assembly*  
GLADYS R. MARKS, *Plate*

## **30 years**

FLORENCE T. ROYER, *Watch Assembly*  
ROBERT A. PRESTON, *Director, Industrial Relations*

## **25 years**

FERYN E. ELY, *Watch Assembly*  
WALLACE R. BORK, *Personnel*  
CHARLES A. KENNEY, *Maintenance*  
JOHN H. FRY, *Chemistry*  
MILLINGTON RIVENBURG, *Director, Market Research*

## **20 years**

JOHN FOX, *Plate*  
EDWARD HUMPF, *Production Planning*  
RUTH IRWIN, *Payroll*  
ROBERT URSPRUNG, *Dial*  
WILLIAM A. WELLER, *Automatic*  
L. WILLIAM McCARTHY, *Escape & Flat Steel*  
MARY GLADFELTER, *Movement Assembly*  
CHARLES M. SHARPE, *Methods & Incentives*  
GEORGE GLOUNER, *Machine & Small Tool*  
GRACE M. YEAGER, *Escape & Flat Steel*  
CARL C. STAUFFER, *Machine & Small Tool*  
LINWOOD BUCHANAN, *Plate*  
CHARLES MONTGOMERY, *Plate*  
ANNA D. SCHEID, *Train*  
KENNETH BITZER, *Machine & Small Tool*

## **15 years**

GERALD P. FREY, *Automatic*



**HAMILTON WATCH COMPANY**  
CREATOR OF THE WORLD'S FIRST ELECTRIC WATCH